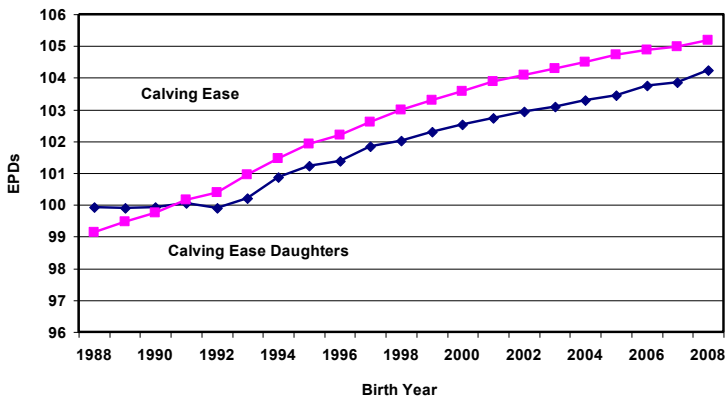


Genetic Trend January 2009

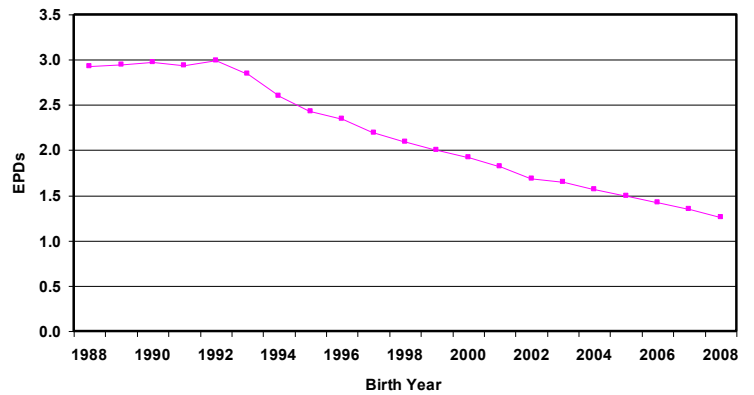
Evaluating birth year average EPD trends for the past several generations can be very useful when plotting future direction since those trends often indicate where a breed has been, where it is headed, and how fast it is moving. The graphs below illustrate the genetic trends in the Gelbvieh breed using all purebred and fullblood animals (males and females) in the NCE analysis.

Gelbvieh genetic trends for the growth traits and milk are generally less than the British breeds but very similar to the other Continental breeds. This is no surprise since Gelbvieh were introduced into the United States as a high growth, maternal breed.

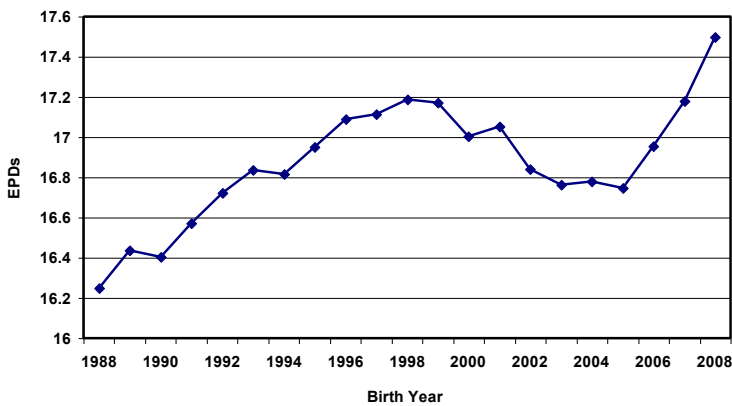
Calving Ease Genetic Trend



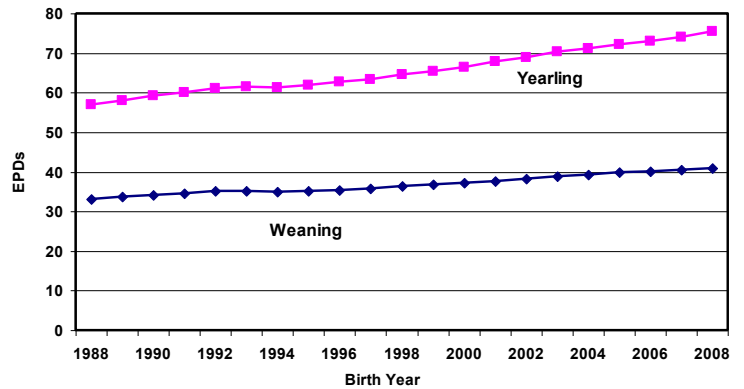
Birth Genetic Trend



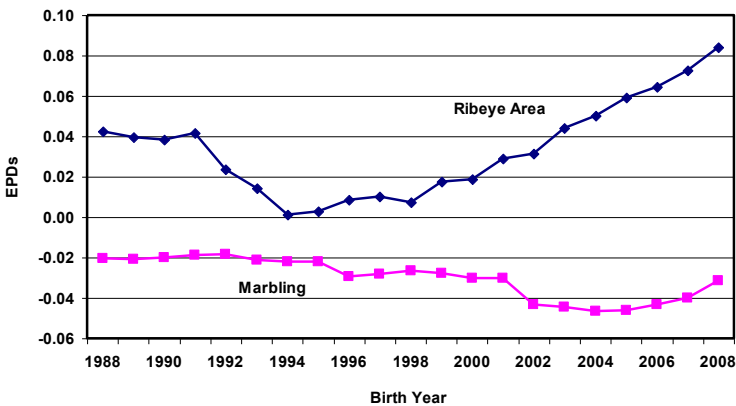
Milk Genetic Trend



Growth Genetic Trend



Carcass Genetic Trend



Stayability Genetic Trend

