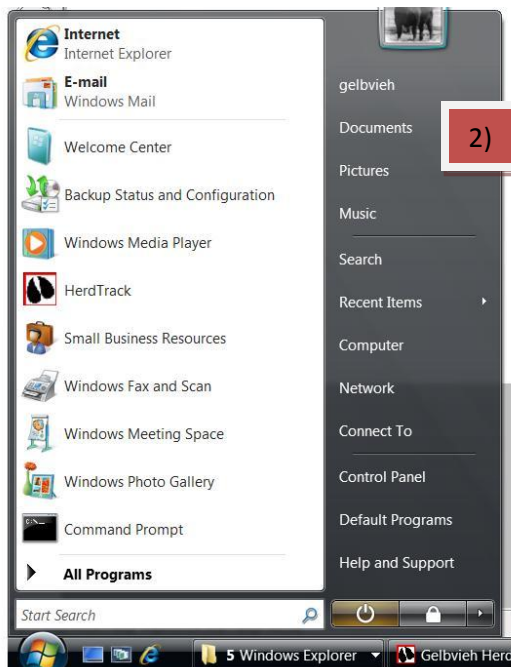


## Using Window Vista Operating System with HerdTrack

One of the nuances of the new Vista operating system is that it does not like to store data files in the Program Files folder. Unfortunately this is how Herdtrack likes to do it. As a consequence many AGA members have had a difficult time finding Backup Files and Export Files. Below are some steps to make this process simpler.

If you are moving your Herdtrack Program from an older “XP” computer make a current backup and copy that file to a Flash Drive or a CD. This file name should look like B#####.NNN : for example B000101.088 - the number after the “B” would correspond to the member number in the Member Setup and the “NNN” is the consecutive number of this particular backup, in the example it is the 88<sup>th</sup> backup of the program for Member 101.

On your new PC with Vista installed, install Herdtrack. Open Herdtrack and enter your Owner name, member number and Prefix just to get going. We will actually override this with the data from your backup but this allow entry into the program initially.

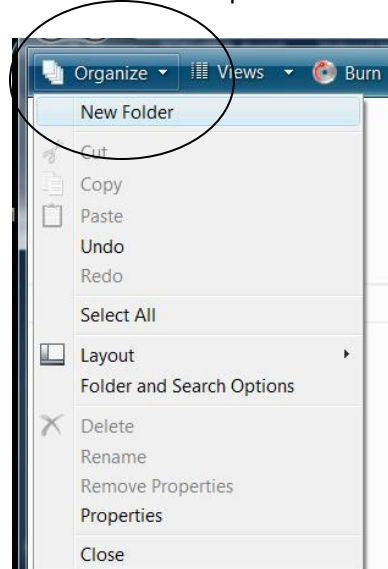


At this point we need to create a couple of folders to store your HerdTrack Data. Click on the Windows Icon (1) on the bottom left portion of the screen. Then in the next window click on the Documents folder (2) in the right-hand portion of the new window.

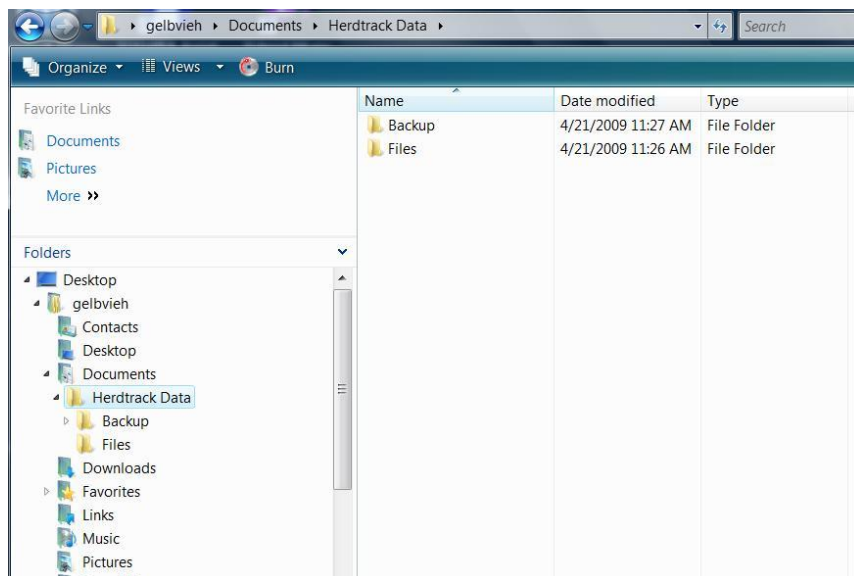


...1) WINDOWS ICON

Then click on the Organize Icon on the top of the new screen. A new sub-window will appear. Here click on New Folder and enter the name Herdtrack Data in place of “New Folder”.



Once this folder is created open it by clicking on it and use the same process to create two sub-folders. Click on the Herdtrack Data folder, then Organize> New Folder and create one called Files. Click on the Herdtrack Data folder again and create one called Backup. The Folders should look as illustrated below.

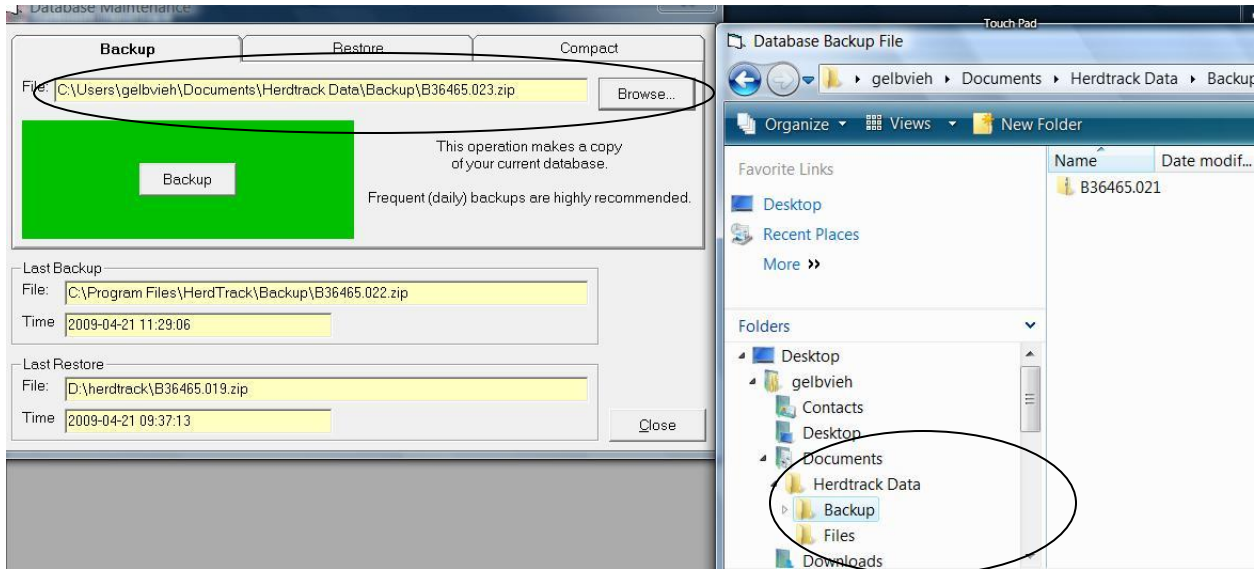


Copy the backup file from your CD or Flash drive to the Backup Folder.

Go back into Herdtrack and under the file menu choose Restore. Browse to Documents> HerdTrack Data > Backup and choose the backup file that you saved and click open. This should restore your HerdTrack files as they were prior to moving to the new computer.

In the future make sure you point to these new folders using the Browse button when you do a backup or save files for export.

Browse to the new Herdtrack Data\Backup location to store the backup file.



In the future when saving files for export, use the Browse feature to store the files that you will send to the AGA. Once they are stored here you will be able to attach them and email them to the AGA. Files sent back to you from the AGA can also be save here and then imported.

